

HIGH ARTS SHOWCASE XXI

Visual Arts Exhibition

March 25 – April 19, 2025



HUNTINGTON ARTS COUNCIL
Brighter lives through art.



HUNTINGTON ARTS COUNCIL

Brighter lives through art.

JOURNEY Arts in Education Program

was established in 1985 by Chairperson Sandy Chapin, local area educators and in partnership with district administrators. The K-12 program is administered through the Huntington Arts Council's Arts in Education Department with the help of district liaisons. The mission of JOURNEY is to integrate cultural arts into classroom curriculum encouraging an individualized experience and appreciation of cultural diversity through the arts.

High Arts Showcase XXI Visual Exhibition

is the Huntington Art Council's annual student exhibition featuring the work of 11th and 12th grade students from the JOURNEY Program's partner schools.

Partner School Districts:

Cold Spring Harbor CSD

Commack UFSD

Harborfields CSD

Huntington UFSD

Kings Park CSD

Northport – East Northport UFSD

Plainview – Old Bethpage CSD

South Huntington UFSD



HUNTINGTON ARTS COUNCIL

Brighter lives through art.

OUR MISSION

The Huntington Arts Council enriches the quality of life of Long Islanders with programs and services that address the needs and interests of artists, cultural organizations and the community.

TABLE OF CONTENTS

Cold Spring Harbor
 Jr/Sr High School 4

Commack High School 11

Harborfields High School 12

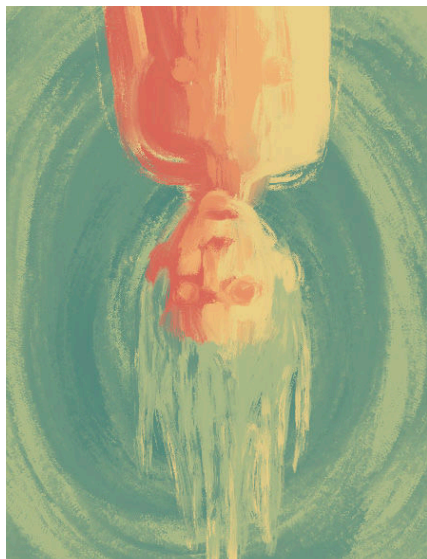
Huntington High School 19

Kings Park High School 26

Northport High School 33

Plainview-Old Bethpage
 John F. Kennedy High School ... 40

Walt Whitman High School 47



COLD SPRING HARBOR
HIGH SCHOOL

LAUREN CASTELLANO

Upside Down

Digital Illustration

11" x 14"

NFS

ARTIST STATEMENT: One thing that I love most about art is the way it can spark discussion and connection. I always think I know my art piece's meaning, but when someone tells me about their take on what I made, it adds a completely new side to it, which I was blind to even as the person who created it. I try to keep my works vague, the subject matter and composition meaning one thing to me, but leaving the door open for anyone to find their own meaning. When I created *Upside Down*, I was thinking about the loneliness of being different in a world where people are becoming more and more alike. But I urge you to ask yourself this: What does this illustration mean to you?



COLD SPRING HARBOR
HIGH SCHOOL

RAQUEL CENTRELLA

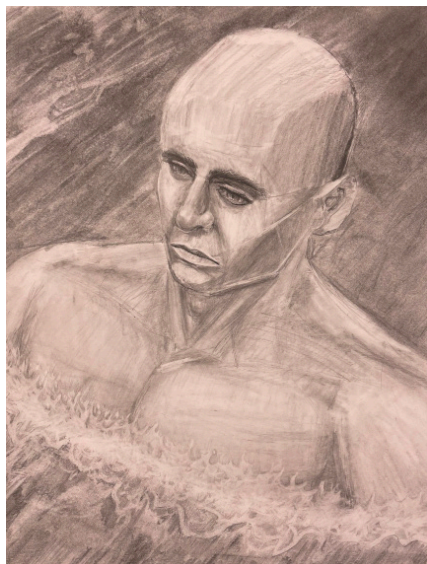
A Stronger Bond

Graphite on Bristol

11" x 17"

NFS

ARTIST STATEMENT: This piece was inspired by my two dogs, Harper and Eddie, and how much they have grown to love each other. I have been exploring the idea of how aging and overuse can affect the things we love as humans, and I believe this piece expresses the pure side of the idea that I have learned can be almost frightening at times. Aging can represent grief and a loss of purity that we have as children. However, as I watch my two dogs who are four years apart grow up, they grow together. As they get older, there is no darkness, fighting, or drama that comes between them unlike it does for humans. "A Stronger Bond" is meant to express how animals put each other before all else and find only joy in world that humans can sometimes only see as dark.



COLD SPRING HARBOR
HIGH SCHOOL

CHRISTOPHER DAM

Monument

Charcoal and Graphite

14" x 17"

NFS

ARTIST STATEMENT: "Monument" represents humanity's resilience and ingenuity in facing the ocean's vast and untamed power. The giant man blocking the ocean, alongside the boat traveling next to him, symbolizes humanity overcoming nature's challenges, innovating, and finding ways to coexist with and conquer its forces.



COLD SPRING HARBOR
HIGH SCHOOL

ABBY EINHORN

Bubbles, Bubbles

Digital Photography

16" x 20"

NFS

ARTIST STATEMENT: This photo marks the start of my exploration to include bold, bright colors in my works. Nature has always been my main inspiration for photography as I love to be outside and it challenges my skills as well as my approaches to photo-taking. I took this photo during a trip to the Long Island Aquarium with my family during a school break. I found this little fish so intriguing and adorable, so I couldn't resist taking some photos. Through this image, I am reconnecting with my love for nature and fun when I am not studying.



COLD SPRING HARBOR
HIGH SCHOOL
MIA O'HARA
Contemplation
Clay
11" x 8" x 8"

NFS

ARTIST STATEMENT: Excited to start a new figure sculpture, I took the learning experience from my self portrait sculpture and figure drawing and applied it to this piece. This time, I wouldn't just be focusing on the face but the entire body. I was now more familiar with how to work with clay and I have grown to love sculpting as a medium. From observation.



COLD SPRING HARBOR
HIGH SCHOOL

ELLA PROVISERO

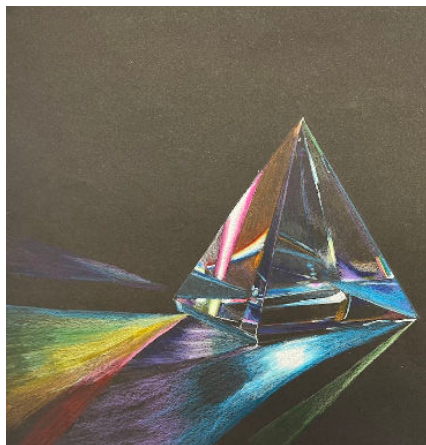
Lighthouse

Oil on Canvas

12" x 16"

NFS

ARTIST STATEMENT: Growing up in Cold Spring Harbor has given me a great appreciation for the east coast and its beauty. "Lighthouse" is my attempt to capture these beautiful views and my love for the coasts where I have spent my life.



COLD SPRING HARBOR
HIGH SCHOOL

NICOLE SCHROCK

Reflection

Color Pencil

11" x 14"

NFS

ARTIST STATEMENT: Instead of creating a piece that was more monotone, I decided to use as many colors as possible within my work. By joining the colors and having them coexist, there is an implied unity rather than inherent separation. I like to believe in unison; that we are stronger together rather than apart, which I hope to communicate within my drawing.



COMMACK HIGH
SCHOOL

JASMINE LUO

Mended Mentality

Mixed Media

56" x 42"

NFS

ARTIST STATEMENT: As a senior in high school, I wanted to express the pressure I have felt from grades and work during school. The wings are a symbolic representation of my freedom. The feathers are being burned on both wings and that is why the closed wing can't help me "fly." However, the feathers on the open wing are being "repaired" by all the memories I've shared with friends and family, allowing me to have more freedom.



HARBORFIELDS HIGH
SCHOOL

HAYDEN CATES

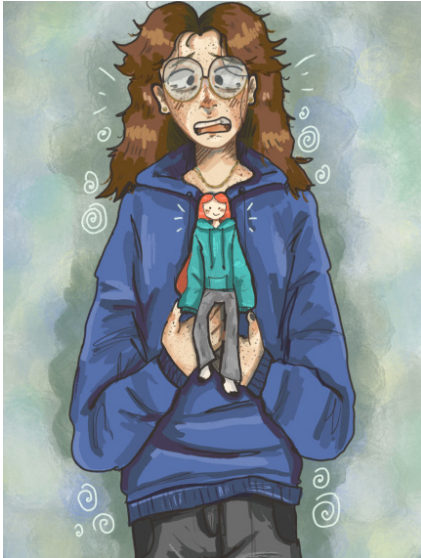
Giuliana Cate

Pen Ink

11" x 13"

NFS

ARTIST STATEMENT: I wanted to create an image that shows how my niece might see the world, as a baby everything is brand new to you especially color. This is why babies find brighter colors so interesting, such as the ones I used in this piece. The lack of color in her skin is to help accentuate these brighter colors, and helps show us her point of view. We are now seeing her in the same way she sees us and everything around her.



HARBORFIELDS HIGH
SCHOOL

MAGGIE DEEGAN

Small Beginning

Digital

8" x 12"

NFS

ARTIST STATEMENT: My piece shows the way I currently draw myself contrasted with the way I used to draw myself in the past. The difference in my art, style, and personality can be seen through expression and detail of the two characters. I try to appreciate and go back to my more humble beginnings and though it might not always seem important, it's always a bit funny.



HARBORFIELDS HIGH
SCHOOL

KAYLEE DELANEY

Opossum Tea Pot

Clay

6" x 10"

NFS

ARTIST STATEMENT: I have always included animals in my artwork somehow. I love to combine my two passions (art and animals) whenever I can. I grew up surrounded by the two and I continue to create combinations of art and animals to express my connection. When I was tasked to create a handmade tea pot I immediately thought of opossums. This came to mind since the mothers are known for carrying their babies on their backs. I thought this would make the perfect top of a tea pot. I hand sculpted the body by making two pinch pots and slip and I scored the two together. When adding the details, I went with a coarse outside to represent hair.



HARBORFIELDS HIGH
SCHOOL

ADDISON DOIG

Veterans Day

Color Pencil

16" x 12"

NFS

ARTIST STATEMENT: My piece is a dedication to the all the veterans who have served our country and have sacrificed themselves for others. I used a medium of colored pencils to help highlight the difference colors within my piece and to outline the objects resembling a veterans day theme.



HARBORFIELDS HIGH
SCHOOL

**SEBASTIAN MOYANO
GONZALEZ**

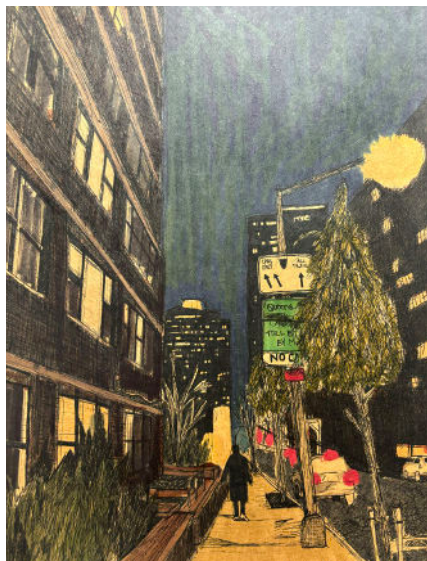
Metropolis Gown

Mixed Media

9" x 12"

NFS

ARTIST STATEMENT: This piece was inspired from art deco architecture and utilizes elements from it such as the monotone color pallet with gold accents, geometric shapes and patterns, and asymmetrical composition. This piece ultimately pushed me as a designer to think outside of the box and experiment with unorthodox means of "constructing" a garment on a croqui, thus creating a finished look that possesses a unique silhouette.



HARBORFIELDS HIGH
SCHOOL

AUDREY KIRCHNER

Cityscape

Pen and Marker

11" x 14"

\$75

ARTIST STATEMENT: This piece was inspired by one of my trips to NYC with my family. We have traveled there frequently to go on what we call "mini-vacations" and every time I am overwhelmed with the versatility of city views. I love the different colors and textures visible every time we go as well as the hustle culture there. It is very comforting in a way because everyone is so busy with their own lives that there is not really any attention on you which gives you the freedom to be yourself. However when the city gives you a chance to be alone, as seen in my picture, it can be interpreted in two ways. To me it means loneliness but also tranquility. You are able to be comforted by your own thoughts while still hearing the bustling cars going by and the bicyclists occasionally. This piece is also very connected to me not only because I love the city but also because the main subject is my dad, taken on one of our outings to NYC.



HARBORFIELDS HIGH
SCHOOL

TALIA STEINBERG

Fallen Soldier

Color Pencil

14" x 11"

NFS

ARTIST STATEMENT: This beautiful memorial is meant to express the beauty of life both during life and death. My hope is that this piece evokes a sense of not only sorrow but pride within the viewer to be a part of a country that has fallen soldiers who are willing to live and die to protect the people they love. Especially in a day and age like the present, it's important to recognize and appreciate those who have given their all and paid the ultimate price to make our day to day life possible.



HUNTINGTON HIGH
SCHOOL

EMMA BOYLE

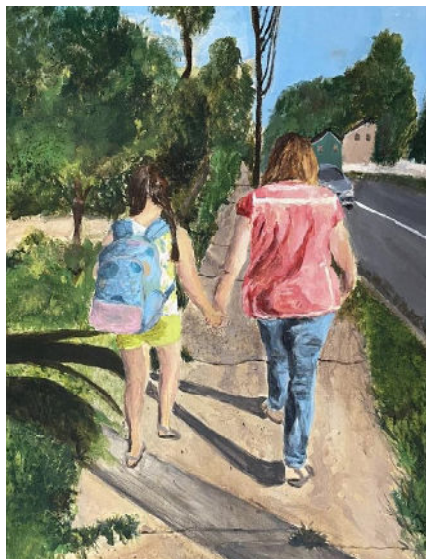
Tuned In

Color Pencil

11" x 8"

NFS

ARTIST STATEMENT: This piece explores the profound connection between music and emotion through the image of a young man playing the guitar. Music, much like visual art, serves as a universal language that transcends words, allowing us to communicate the depths of our human experience. In this work, the guitar becomes more than just an instrument; it symbolizes the conduit through which emotion flows, unrestrained and raw. The young man in the artwork is caught in a moment of introspection, his fingers delicately strumming the strings, each movement imbued with the weight of his emotions. His expression is focused, yet distant, suggesting that the music is both a release and a mirror, reflecting a complex inner world. The colors surrounding him echo the tone of the music which are tempered, capturing the dynamic range of human feeling. Through this piece, I aim to convey that music, like visual art, allows for a direct emotional expression that often bypasses the constraints of language. Whether it's joy, sorrow, longing, or triumph, both music and art provide us with a unique space to process and articulate what words cannot. The rhythm of the guitar and the tension in the artist's posture serve as metaphors for the ebb and flow of emotion, reminding us that at the heart of both art forms is the same powerful force: the human need to feel, to express, and to connect.



HUNTINGTON HIGH
SCHOOL

MAYA AKERMAN

Holding Hands With Susy

Acrylic Paint

18" x 24"

NFS

ARTIST STATEMENT: This painting captures the intimate moment between me and my grandma on my first day of 5th grade. Despite the vast physical distance that separates us, the image of us holding hands speaks to the enduring bond of love, even when geography, culture, and time zones create barriers. This bright and colorful picture reminded me of her optimistic spirit and beautiful soul. To depict this, I used bright colors and layered various paints to create texture and dimension in the painting. This painting explores the themes of longing, connection, and the timeless nature of familial love, illustrating how such ties are never broken, even across continents. It invites the viewer to reflect on their own relationships, the invisible threads that hold us together, and the moments we cherish despite the distance that may separate us. Unfortunately, Susy won't see this painting but I will continue to create art for her.



HUNTINGTON HIGH
SCHOOL

IVERSON MENJIVAR

Shining from Within

Ceramic

7" x 10" x 14"

NFS

ARTIST STATEMENT: For my final ceramics piece as I prepare to transition into college, I wanted to create something that cultivated depth and beauty. I envisioned an openwork design with gems inside, symbolizing the beauty found in the small accomplishments of life. This piece is composed of three distinct parts that come together to form a cohesive whole. The number three is deeply symbolic, representing balance, harmony, and the interconnectedness of life. Each piece in my work stands for a different aspect of the average human life including the past, the present, and the future. Together, they illustrate the continuous flow of time and the growth. The open spaces in the design signify the opportunities and unknowns that lie ahead, while the gems inside highlight the precious moments and achievements. This artwork is a reflection of my continuous personal evolution and a tribute to the transformative power of creativity. As I move forward into the next chapter of my life, I carry with me the lessons and experiences from my ceramics class, forever grateful for the sanctuary it provided.



HUNTINGTON HIGH
SCHOOL
ARLY MOREIRA PORTILLO

Faceless

Digital Photography

16" x 20"

\$75 (Without Frame)

ARTIST STATEMENT: With a passion for photography as both an art form and a means of expression, Arly Moreira Portillo continues to push creative boundaries, using her lens to bring unseen emotions to light. The image presented here titled *faceless*, represents a teenager stripped of identity and independence in a society that often stifles expression and invalidates emotions. Muted cool tones and soft lighting convey a sense of dissociation and sadness. The photograph invites viewers take a deeper look at the feelings of invisibility we experience as youth. Through this work, I aim to shed light on the universal struggle for identity, especially in youth, and challenge viewers to consider the impact of environments that silence rather than nurture.



HUNTINGTON HIGH
SCHOOL

TAYLOR NAPPI

Growing Pains

Digital Photography

16" x 20"

\$50 (Without Frame)

ARTIST STATEMENT: Taylor is creating a series of images that beautifully illustrate the transition from childhood to adulthood. Each piece captures the complex emotions tied to this journey, such as joy, nostalgia, uncertainty, and growth. The artwork aims to resonate with viewers by portraying moments of innocence and discovery alongside challenges and self-realization. Through vibrant visuals and thoughtful composition, Taylor seeks to explore the universal experience of growing up. The images presented here portrays the idea of the pain we feel as we age, the passage of time, and trying to hold onto our childhood.



HUNTINGTON HIGH
SCHOOL

TONI REYES-SORTO

Painted

Fabric & Spray Paint

63" x 30" x 30"

NFS

ARTIST STATEMENT: "Painted" explores the relationship between fabric, color, and self-expression. The white gown serves as a blank canvas, symbolizing purity, while the vibrant spray paint splatters represent the burst of individuality and creativity. Each spray of color reflects the fluidity of identity and the act of transforming something conventional into something unique. The contrast between the delicate fabric and bold colors invites viewers to question the boundaries of art, fashion, and personal transformation, challenging the notion of what a garment can be.



HUNTINGTON HIGH
SCHOOL
ESTIVEN SEGOVIA TICAS

Hermano Menor

Digital Painting

16" x 20"

NFS

ARTIST STATEMENT: This digital painting is a tribute to my little brother. It's an exploration of one of his many expressions that reflect the complexity and depth of his personality. As someone who has grown up with him, I have had the privilege of witnessing not just his outer appearance, but the many layers that make him who he is—each mood, each glance, each subtle gesture telling a different part of his story. In this piece, I chose to capture an expression that stands out—a moment that feels both fleeting and timeless. His expression is one of silly boredom, intertwined with the annoyance of having to pose for me. The use of color in the painting reflects his personality: bold and vibrant tones juxtaposed with softer, more muted hues, representing the duality within him—his playful, outgoing side and his more contemplative, reserved moments. I chose to incorporate in his hair a semi-celestial texture to add contrast and variety and to also symbolically express the bubbly side of his personality. Through the blending of digital techniques, I sought to communicate not just his appearance, but the emotions and nuances that make up his being. This painting is less about a literal portrayal and more about capturing the essence of who my brother is, at a specific moment in time. Each brushstroke represents a small piece of the complex puzzle that is his personality, which can never truly be captured in one image, but through this work, I hope to offer a glimpse of his true self. As an artist, this piece allowed me to dive deeper into the realm of portraiture, where expression is everything. I hope that viewers, whether they know him or not, can relate to the universal nature of human emotion and see, in his face, something that speaks to them on a personal level.



KINGS PARK HIGH
SCHOOL

MACKENZIE CLARKE

Still Life with Landscape

Acrylic Paint

16" x 20"

\$150

ARTIST STATEMENT: I created this piece last year during my junior year in Drawing and Painting. As a class we decided what items to use for this still life. On the easel a student was inspired by Claude Monet's painting "Impression Sunrise". Using different colors to enhance the original painting. We tried to pair colors together, like the red vase and the bow. Another example is the blue cloth, the vase and the flowers.



KINGS PARK HIGH
SCHOOL

ALEXA GUILIANO

A Painter's Still Life

Acrylic Paint

12" x 9"

\$40

ARTIST STATEMENT: My works of art are varieties of mostly paintings and still life visuals. I really enjoy painting in the realism style and hope to branch out into using more stylistic choices and elements within my artworks.



KINGS PARK HIGH
SCHOOL

ALYSSA IGLESIA

Reindeer

Oil Paint

12" x 16"

NFS

ARTIST STATEMENT: This piece was my second time using oil paints, and my first time stretching my own canvas. I chose a Reindeer because I've always loved animals and it was around the holiday season. I wanted to step out of my comfort zone and try to simulate the textures as much as I could using paint.



KINGS PARK HIGH
SCHOOL

ELIZA MILLEN

Pressure

Mixed Media

24" x 24"

\$175

ARTIST STATEMENT: This piece was done with black and white oil paints on canvas, and I used various red fabrics secured by hot glue to frame my painting. The fabrics are tiered layered on top of one another giving a tunnel effect to draw the eye to the center. I chose to paint a dancer on the ground holding her head with a stressed expression, because this is often how I feel in regards to ballet. I chose to do the dancer in black and white because she represents the darker, anxious feeling I associate with ballet, and the frivolous fabrics and vibrant colors contrast this showing how the less than beautiful side of ballet is hidden on stage with frilly costumes and bright colors, and how dancers often have to hide their true emotions to perform.



KINGS PARK HIGH
SCHOOL

VIOLET PAGE

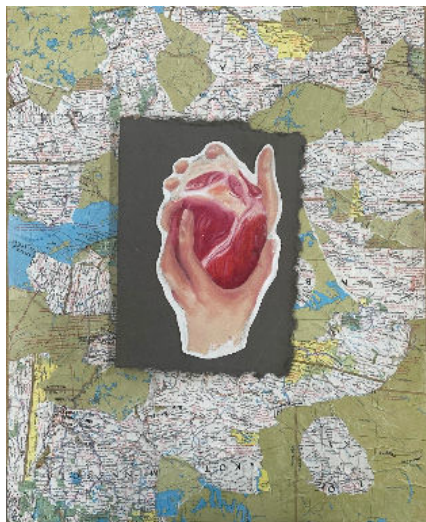
Spheres of Influence

Oil Paint

12" x 16"

\$200

ARTIST STATEMENT: This piece is part of my sustained investigation for AP portfolio. It depicts a literal interpretation of the term "sphere of influence" and how commerce has changed over the past 300 years. I chose the blue theme after dabbling with a few different ideas and connecting the tone of the painting most with the shades of blue.



KINGS PARK HIGH
SCHOOL

NICHOLAS SKEWES

*All Roads to You Integral
to Me*

Mixed Medium

20" x 16"

\$300

ARTIST STATEMENT: My piece was made for my AP portfolio class, with a sustained investigation that questions how music can be interpreted and visualized to portray it's meaning. The pieces of my investigation are all song lyrics visualized. The lyric from this piece is from "Arcadia" by Lana Del Rey and the lyric reads "All roads that lead to you as integral to me as arteries". My vision with the piece was to put the words into a literal context, where the most vital artery is being upheld over a series of roads. My intention with the piece was to portray a raw feeling, with the skin stained red from holding the beating heart.



KINGS PARK HIGH
SCHOOL

KAITLYN WOLF

Speakeasy Sunrise

Water Color

14" x 22"

NFS

ARTIST STATEMENT: This piece is a still life completed through fall. It was created by using watercolor paint. The depth was created by using layering and watercolor with various opacities to create a certain look.



NORTHPORT HIGH
SCHOOL

LIAM CAULFIELD

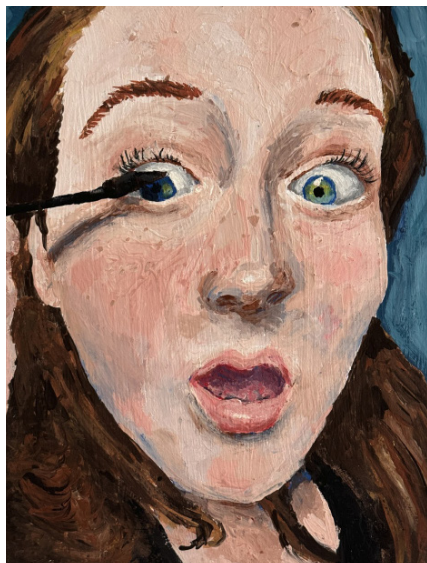
Falling into Fantasy

Digital Painting

13" x 19"

\$200

ARTIST STATEMENT: My piece depicts a young boy falling into a fantasy world, capturing the essence of escaping reality and experiencing a dreamlike adventure. The cartoonish style and diverse use of color highlight the innocence and excitement of childhood imagination, where a simple fantasy world is filled with iconic aspects like swords, crowns, potions, and knights.



NORTHPORT HIGH
SCHOOL

MAGGIE COATES

Self Portrait: Getting Ready

Acrylic Paint on Canvas

10" x 8"

NFS

ARTIST STATEMENT: I decided to create a self-portrait of myself. This is the face I make every morning when getting ready for school. I figured it was a relatable expression for many women. I decided to use acrylic paint with linseed oil in order to better blend my skin tone. I challenged myself to use a palette without black for my face, instead I used blues. In addition to this I used small brushstrokes in order to effectively blend. There is significance within these single moments. Though it represents the monotony of day to day life, it also shows the comfort within it.



NORTHPORT HIGH
SCHOOL

DEANDRE ELVIR

War Scavengers

Ink

11" x 17"

NFS

ARTIST STATEMENT: This piece is about the two character exploring the aftermath of a fierce battle.



NORTHPORT HIGH
SCHOOL

KAITLIN GARDELLA

Nakupenda

Photography

13" x 16"

\$150

ARTIST STATEMENT: My piece, entitled Nakupenda, is a photograph I took during my trip in February of 2024 to the small village of Mtito Andei in Kenya. The figure pictured in the photograph is Pendol, one of the children of the community that I had the pleasure of sharing a bond with. During my time in their community, the men women and children of Mtito Andei welcomed me and my peers into their community with open arms and warm embraces, as though we were not strangers but family. The title of this piece, Nakupena, means 'I love you' in Ki Kamba, the local language of the community. I chose this title because it not only reflects the heart symbol Pendol is displaying in her pose, but also the biggest thing I took away from this trip: the notion of love and how powerful it can be. Despite the fact that we were strangers entering their community and we had a profound language and cultural barrier, we were able to create everlasting bonds with the village members and foster loving connections unlike any I have ever known. This trip opened my eyes to a new kind of love that I never knew existed, a love of coexistence and mutual respect and appreciation for other human beings despite our vast differences.



NORTHPORT HIGH
SCHOOL

CLOVER KONOP

Mens World

Mixed Media

23" x 35"

NFS

ARTIST STATEMENT: This piece is meant to highlight the social standards held for women, not only in the past but today as well. Men have continuously maintained an advantage over women, creating an imbalance, whether noticeable or not.



NORTHPORT HIGH
SCHOOL
SAMANTHA YOLANGO

Disco Diva

Fabric

58" x 13" x 10"

NFS

ARTIST STATEMENT: This piece was created to reflect a modern approach to the disco outfits of the 1970's. The sparkly fabric was chosen to represent disco balls and the style is inspired by 70s outfits typically worn to discos.



NORTHPORT HIGH
SCHOOL

KATHLEEN YUN

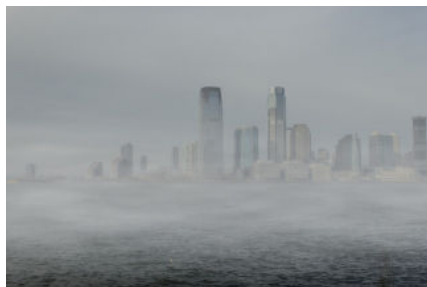
Bleeding Fluorescence

Digital Painting

19" x 9.5"

\$200

ARTIST STATEMENT: I started the piece when I was really mad about something, which I don't remember now, however it can still be seen in the work. I wanted to make something cluttered with things I like and small details. On the left, the items' positions are supposed to create a wing shape. I also really like using bright "candy" colors so have fun being blinded.



POB JOHN F. KENNEDY
HIGH SCHOOL

ANTHONY BUFFOLINO

Misty City

Digital Photography

13" x 19"

\$100

ARTIST STATEMENT: I am currently investigating how environments cause people to feel various emotions. On a trip to New York City during cloudy weather I saw the Hudson River and Jersey City on the other end. The colors I saw were gray and dull which produces a feeling of sadness and eeriness. To enhance those feelings, colors were darkened and fog was added.



POB JOHN F. KENNEDY
HIGH SCHOOL

BAIHE FU

Mending My Mind

Watercolor, Gouache

24" x 30"

NFS

ARTIST STATEMENT: Sewing has always been my side hobby when I'm feeling bored or lonely. Sometimes I would make things for myself, and sometimes I would help my family members to mend their clothes or sheets. But what I really wanted to express in this piece is the process of sewing. Because when I sew, I feel my burden has been lifted so engaged that I no longer feel unpleasant of my surroundings.



POB JOHN F. KENNEDY
HIGH SCHOOL

KAYLA JASSER

Unravel The Mind

Wool and Organza Fabrics

18" x 30"

NFS

ARTIST STATEMENT: This piece is inspired by the feeling I get while dancing. I use dance as an outlet for my stress and wanted this garment to depict that sensation. The garment demonstrates the transition between the constrained feelings of stress and the release of this stress, with the inspiration of a straight jacket transitioning to the flowy arms, as if the stress is rolling off of my shoulders. I am able to show this through contrast and shape. The garments cut-outs also demonstrates the feelings of exposure. This piece is very near and dear to my heart as it depicts the true feelings I get while dancing and is an important factor in my life.



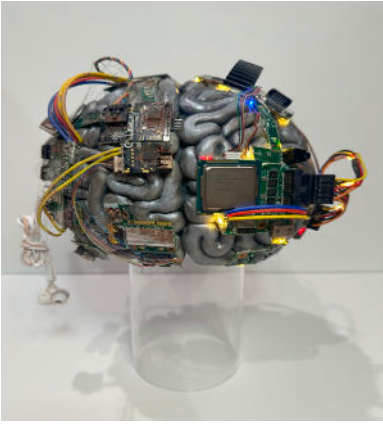
POB JOHN F. KENNEDY
HIGH SCHOOL
SYDNEY JASSER

*Fading Echoes of Waves
and Memory*

Organza and Cotton Fabric
37" x 12.5" x 11"

NFS

ARTIST STATEMENT: This piece is 1/10 pieces I have made for my senior year AP 3D sustained investigation. In this investigation, I am focusing on the art of physical reflections and how they can serve as metaphors for ones mental state. In this investigation, I follow the guiding question of "How can physical reflections serve as a metaphor for mental and emotional reflections, and what deeper insights can this connection reveal about self-awareness and identity?" This specific garment draws inspiration from reflection-as in the breaking relation between horizon line and waves of water. The shrug is intended to capture the interplay between the horizon line and waves as they flow in the ocean. In this design, each wave symbolizes the complexity of time and perception. Just as every wave carries its own reflection, so do our experiences. Those reflections are not static; they change as they travel through time, just like how the farther we are removed from where our memories were formed, the more the nature of memories are lost to us. In this piece, I place focus on the subtlety of the waves and their reflections for representing our memories, which are just like the waves- always changing with the passage of time and distance. It holds within it the beautiful and fragile moments of reflections first forming-the very moment in which something familiar becomes new. It's a celebration of the impermanence of memory, of the quiet, ever-changing reflections that outline our understandings of the world and ourselves.



POB JOHN F. KENNEDY
HIGH SCHOOL

CLAIRE LIM

Athazagoraphobia

Mixed Media

15"x 7" x 10"

NFS

ARTIST STATEMENT: This piece is called "Athazagoraphobia: The Fear of Forgetting Someone or Something". It represents the fear of losing one's memory, & is intended to focus on dementia in particular. This piece was created to reflect my fear of me or my loved ones succumbing to dementia as we grow old, which originally stemmed from my mother expressing her worries about developing the illness. I find that the prospect of slowly forgetting someone or being forgotten is terrifying, as it is hard to imagine no longer recognizing people that you've known all your life. This piece shows this concept by displaying a cyborg-like brain with one side being lit up, new, & fully functioning while the other is rusting, broken, & full of cobwebs. This is meant to represent how, similar to computer parts deteriorating over time, the brain & one's memory can diminish as one gets older.



POB JOHN F. KENNEDY
HIGH SCHOOL

SUYI MEI

Nocturne

Chalk Pastel

16" x 20"

NFS

ARTIST STATEMENT: The lights at night are always more attractive than those during the day. I am often fascinated by the feeling brought by these kinds of lights, the sense of belonging and being guided. In my artwork this time, I aim to convey an emotional experience to others, rather than focusing on the traditional depiction of form in drawing. I painted a blurry picture of the dazzling array of things on the road at night.



POB JOHN F. KENNEDY
HIGH SCHOOL

NICOLE PELTER

The Art of Mustangs

Denim, Cotton, Felt

55" x 17" x 10"

NFS

ARTIST STATEMENT: My sustained investigation explores how the features of a Ford Mustang can be transformed into wearable fashion designs. Through constant experimentation, practice, and refinement, I have explored ways to integrate the car's shape, materials, and signature design elements into apparel and accessories. My work emphasizes the elements of art and principles of design, with a particular focus on movement, texture, and color. While texture highlights the combination of smooth metal, plush leather seats, and bumpy roads, movement demonstrates the Mustang's quick speed and efficient design. Vibrant colors help in capturing the vehicle's strength, power, and impressive appearance.



WALT WHITMAN HIGH
SCHOOL

JULIAN BAXTER

Self Portrait

White Charcoal

18" x 24"

\$30

ARTIST STATEMENT: This is a reductive drawing done with white charcoal on black paper. The marks are intended to be energetic while also communicating a fairly realistic image of self.



WALT WHITMAN HIGH
SCHOOL

LILAH BLACK

Vase with Fruits

Oil Paint

13.5" x 17.5"

NFS

ARTIST STATEMENT: This is a classic study of fruits and a pitcher, done in oil paint. The variations of forms with their different colors, as well as the light and shadow, present a range of challenges that must be balanced and composed.



WALT WHITMAN HIGH
SCHOOL

NAOMI CHAVEZ

Emotions of Science

Ceramics, Mixed Media

6" x 8" x 4"

NFS

ARTIST STATEMENT: This piece is titled 'Emotions of Science'. The form is a whimsical interpretation of a neuron.



WALT WHITMAN HIGH
SCHOOL

SHEA GANNON

Self-Portrait

Graphite Pencil

14" x 18"

\$100

ARTIST STATEMENT: Through my work, I am exploring the vast range of shades and challenging myself with proper proportions to achieve the most realistic results. I'm attempting to display a story through my art that allows viewers to feel all the emotions I experience while creating the piece. By doing so, I hope to convey a deeper understanding of my inner world and the nuances of my self-perception.



WALT WHITMAN HIGH
SCHOOL

AVA HEDSTROM

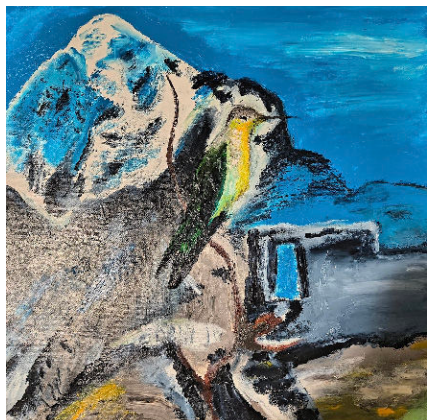
Casted

Chalk Pastels

20" x 16"

NFS

ARTIST STATEMENT: A flick of light comes up onto my brow as the shadows cast along my face from the light through my curly hair. The combination of the extreme lights and darks creates an ominous tone throughout the artwork. Yet, my diverse use of colors and mixed range of values develops an eccentric and exciting piece. My skill in self-portraiture has grown in the past years expanding my desire to challenge myself and experiment. This piece was just that. Using Chalk Pastel, I captured a detailed and stunning moment while working from different shifts of light and surfaces. Self-portraits have been a way of expressing and exploring all the different faces of myself.



WALT WHITMAN HIGH
SCHOOL

AARON JERI

Inti Punku

Acrylic

15.5" x 15.5"

NFS

ARTIST STATEMENT: Art, for me, is a way to explore my identity, experiences, and the things that shape how I see the world. My work is influenced by my Peruvian background, music, and experimental techniques. I like to try new styles and approaches, but at the end, my goal is always to capture something real—whether it's emotion, contrast, or just a moment that feels honest. I create because I have something to say, even if I don't always have the words for it. My pieces reflect what I think about, what I've lived, and what I find interesting. I'm always experimenting, pushing myself to see what else I can do while staying true to what makes my art mine.



WALT WHITMAN HIGH
SCHOOL

ANDREAS PSARRIS

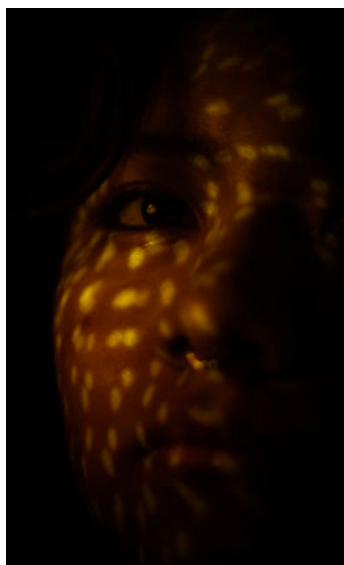
The Art of Music

Photography

16" x 20"

NFS

ARTIST STATEMENT: As a musician myself, I wanted to capture the art of playing a musical instrument through my lens. I wanted to highlight that the art of playing an instrument is more than just the sound that comes out of the instrument. The musician plays a huge part as well with proper posture and fingerings, which is what I highlighted using broad lighting techniques on the model and her flute, with my camera at a lower ISO to really capture the light on the model and her flute. Post editing on Lightroom included de-saturating the image to bring out the light even more, and to adjust the overall lighting of the image to really bring out the desired effect of the piece, to show the Art of Music through photography.



WALT WHITMAN HIGH
SCHOOL

CATY RAMOS

You

Digital Photography

11" x 20"

NFS

ARTIST STATEMENT: First time taking a photo of myself.

Thank you Teachers!

We extend our heartfelt appreciation for your dedication and passion in nurturing creative minds through art education. Your commitment to fostering artistic expression and cultivating imagination is truly commendable.

Cold Spring Harbor High School

Christine Oswald

Commack High School

Marie Adamo

Harborfields High School

Elizabeth Devaney
Eileen Rottkamp

Huntington High School

Ayallah Jeddah
Kasmira Mohanty
Pamela Piffard-Williams
Kristin Singer
Kim Valerio

Kings Park High School

Darlene Blaurock

Northport High School

John J. DeRosa
Christine Driscoll
Anthony Klinger-Cooley
Robin O'Neill-Gonzalez

Plainview-Old Bethpage High School

Jennifer Beinlich
Linda Curran
Rosemarie Elder
Kelly Verdi

Walt Whitman High School

Jessica Flinn
David Rickmers
Gina Tinucci
Erica Raji

THANK YOU TO OUR JUROR FOR THIS EXHIBITION

JESUS MODESTO,
ART TEACHER,
JOHN F. KENNEDY SCHOOL,
GREAT NECK PUBLIC SCHOOLS

With additional support from:



**Council on
the Arts**

Thank you to our Main St. Benefactor Members
Bette and Paul Schneiderman



HUNTINGTON ARTS COUNCIL
Brighter lives through art.

213 Main Street, Huntington, NY 11743
631.271.8423
info@huntingtonarts.org
huntingtonarts.org