



# HUNTINGTON ARTS COUNCIL

*Brighter lives through art.*

Inspired by Long Island's history, create a work that focuses on an aspect of Long Island's cultural and natural heritage. Some prompts to consider: seaside industry, farm life, Native Americans, the American Revolution, art colonies, etc. Consider photos and paintings of historic landmarks and sites, portraits of reenactors, sculptures of ancestors, assemblages with local artifacts, and everything in between!

Juror Stephanie Gress is the Director of Curatorial Affairs for the Suffolk County Vanderbilt Museum. A graduate of the State University of New York at Stony Brook with a master's degree in art history, Gress believes that visual arts convey the spirit of the time in which they were produced. Gress enjoys researching and writing about art and architecture to better understand our collective history.

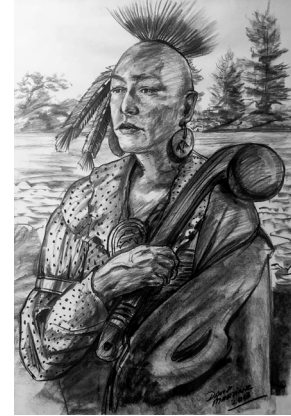


Image: David Martine

## "DISCOVERING LONG ISLAND": DEC. 7 – JAN. 5

### ENTRIES

- Entries must be original to entrant. Framed entries require hanging wire. Submission materials cannot be returned.
- Selected works are chosen by the juror. No more than two works per artist are selected.

### ELIGIBILITY

- All artists and media.

### SIZE

- No work should exceed 48 inches on the longest side or 24 inches on the shortest side (with frame). Standing work cannot be higher than 72 inches. Video maximum: 50 MB.

### ENTRY FEE

- First three entries: JOURNEY\* school students \$15, full-time students \$25, artist members \$30, non-members \$40. Additional entries: \$5 each. Please note: **Entry fees are nonrefundable.**

### LIABILITY AND INSURANCE

- Works are insured while in the possession of the Huntington Arts Council.

### SALES

- HAC retains a 25% commission on sold work.

### HOW TO ENTER

1. Submit application and payment at [www.huntingtonarts.org](http://www.huntingtonarts.org) (preferred method).
2. Download paper application from website. Mail or drop off with CD images and payment.  
**Note:** Images must be no larger than 7mb (300 dpi, 2400 pixels on the longest side).

QUESTIONS? [info@huntingtonarts.org](mailto:info@huntingtonarts.org)

### \*CURRENT JOURNEY SCHOOL DISTRICTS

- Cold Spring Harbor • Northport-East Northport USFD
- Commack UFSD • Plainview-Old Bethpage CSD
- Harborfields CSD • South Huntington FSD
- Huntington UFSD

ENTRY DEADLINE: Oct. 15

E-MAIL ACCEPTANCE: Oct. 29

DELIVER WORK: Dec. 4 (9am-5pm)

RECEPTION: Dec. 14 (6-8pm)

CLAIM WORK: Jan. 7, '19 (9am-5pm)

EDUCATION • SUMMER FESTIVAL • GALLERY • EXHIBITIONS • GRANTS • EVENTS

631.271.8423 • [Info@huntingtonarts.org](mailto:Info@huntingtonarts.org) • 213 Main Street, Huntington, NY 11743 • [huntingtonarts.org](http://huntingtonarts.org)



# HUNTINGTON ARTS COUNCIL

*Brighter lives through art.*

## PAPER APPLICATION

Fill out if not submitting work via [www.huntingtonarts.org](http://www.huntingtonarts.org). Print extra pages for additional submitted works, or write information in the same format on the back of this sheet.

NAME \_\_\_\_\_ PHONE \_\_\_\_\_

E-MAIL \_\_\_\_\_

HUNTINGTON ARTS COUNCIL MEMBER    Y     N

STREET ADDRESS \_\_\_\_\_

CITY \_\_\_\_\_ STATE \_\_\_\_\_ ZIP \_\_\_\_\_

ARTIST WEBSITE \_\_\_\_\_

### FULL-TIME STUDENTS

SCHOOL \_\_\_\_\_ GRADE \_\_\_\_\_

AMOUNT PAID FOR SUBMISSIONS \$ \_\_\_\_\_

### SUBMITTED WORKS

1. TITLE \_\_\_\_\_ PRICE \$ \_\_\_\_\_

MEDIUM \_\_\_\_\_ SIZE \_\_\_\_\_

2. TITLE \_\_\_\_\_ PRICE \$ \_\_\_\_\_

MEDIUM \_\_\_\_\_ SIZE \_\_\_\_\_

3. TITLE \_\_\_\_\_ PRICE \$ \_\_\_\_\_

MEDIUM \_\_\_\_\_ SIZE \_\_\_\_\_